

# Symbola

## FEATURES AND REPERTOIRE

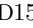

Symbola, version 11.00, April 2018  
free strictly for personal, non-commercial use

Unicode Fonts for Ancient Scripts  
George Douros

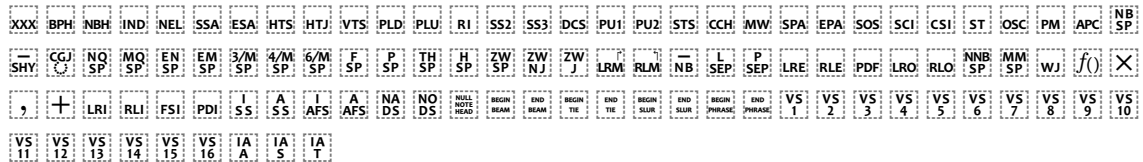
## OpenType features

- [illegible]

## version notes

- ✓ Complete Latin, Greek, Cyrillic, Hebrew, Coptic, Gothic, Deseret, Phonetic and Combining Marks' blocks;
- ✓ Symbols and characters (164 new glyphs) introduced in Unicode 11;
- ✓ Added italics for FfFfæœf123fſt123tf.... (FfFfæœf123fſt123tf....);
- ✓ Scan lines (23BA...23BD) are designed 'unified' with other (203E, 2013, 005F) relevant glyphs: `~--~--~_`
- ✓ Spaces and control characters may be graphically displayed by transposition to Plane-15. For example, the zero-width joiner U+0200D can be displayed as U+F200D = , or the null notehead U+1D159 as U+FD159 = .

These are the only *Symbola* glyphs in Private Use Areas:



## document information

- ✓ This document uses only *Symbola* font; with all its `OPEN TYPE` features.
- ✓ There are no weight or style variants of *Symbola*; the *Mathematical Alphanumeric Symbols* (1D400.. 1D7FF) block contains such variants for letters with the semantics of UTRreport 25: 'Unicode Support of Mathematics'; see also pp. 786-789 of "The Unicode Standard Version 10.00 - Core Specification".
- ? Screen appearance of hinted or unhinted *Symbola* depends on the actual OS and application used.
- ✗ OpenType features are implemented only in high-end desktop publishing software; popular word processors do not support advanced OpenType features.
- ✓ LibreOffice, by THE DOCUMENT FOUNDATION, supports all OpenType features present in *Unicode Fonts for Ancient Scripts*. This PDF document was prepared in LibreOffice 5.4.2.2; the accompanying source file, *Symbola.otd*, will not display correctly in other applications.

## blocks covered

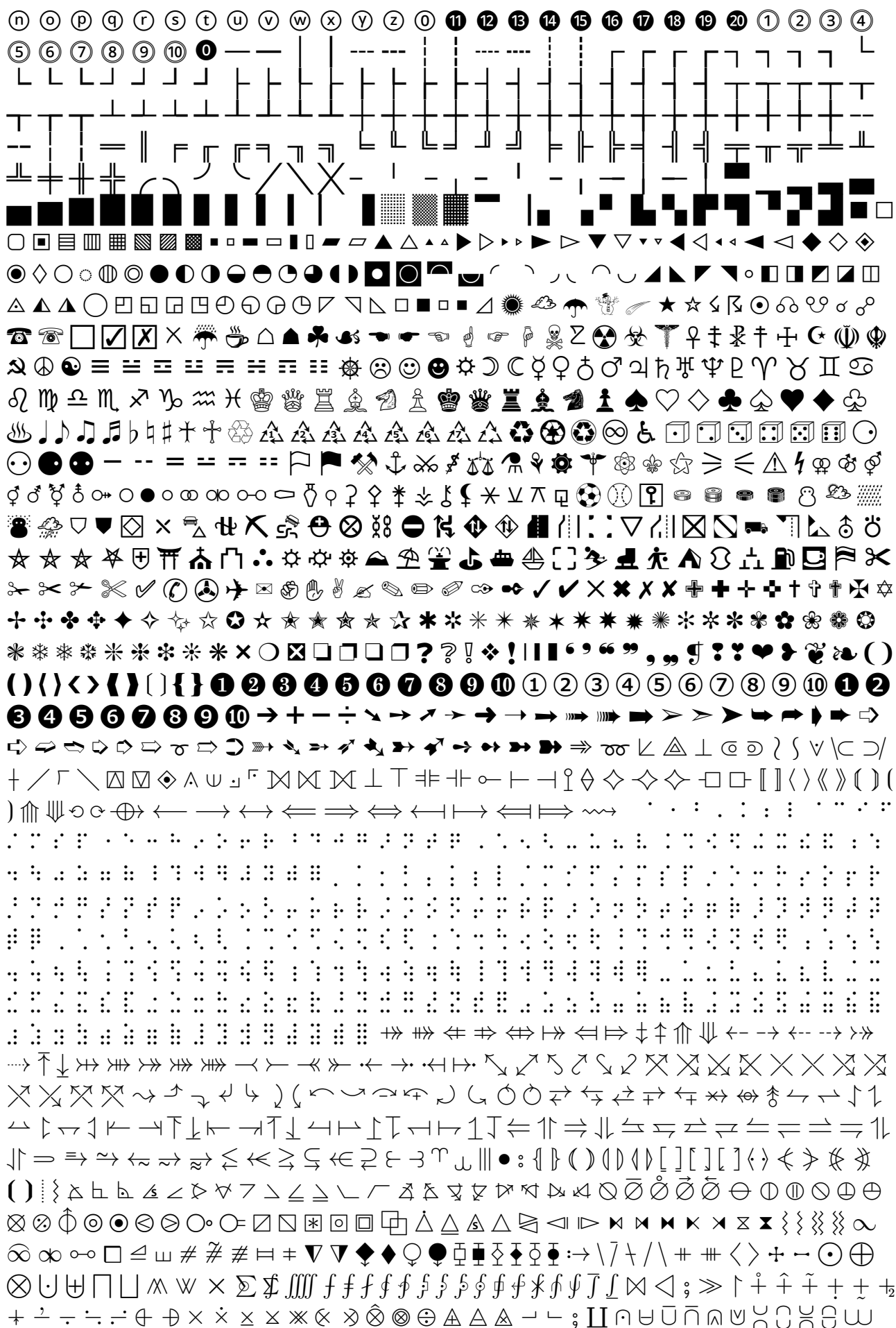
- BMP Basic Latin, Latin-1 Supplement, Latin Extended-A, Latin Extended-B, IPA Extensions, Spacing Modifier Letters, Combining Diacritical Marks, Greek and Coptic, Cyrillic, Cyrillic Supplement, Hebrew, Combining Diacritical Marks Extended, Cyrillic Extended-C, Phonetic Extensions, Phonetic Extensions Supplement, Combining Diacritical Marks Supplement, Latin Extended Additional, Greek Extended, General Punctuation, Superscripts and Subscripts, Currency Symbols, Combining Diacritical Marks for Symbols, Letterlike Symbols, Number Forms, Arrows, Mathematical Operators, Miscellaneous Technical, Control Pictures, Optical Character Recognition, Enclosed Alphanumerics, Box Drawing, Block Elements, Geometric Shapes, Miscellaneous Symbols, Dingbats, Miscellaneous Mathematical Symbols-A, Supplemental Arrows-A, Braille Patterns, Supplemental Arrows-B, Miscellaneous Mathematical Symbols-B, Supplemental Mathematical Operators, Miscellaneous Symbols and Arrows, Latin Extended-C, Coptic, Cyrillic Extended-A, Supplemental Punctuation, Yijing Hexagram Symbols, Cyrillic Extended-B, Latin Extended-D, Latin Extended-E, Alphabetic Presentation Forms, Variation Selectors, Combining Half Marks, Specials;
- SMP Aegean Numbers, Ancient Greek Numbers, Ancient Symbols, Phaistos Disc, Coptic Epact Numbers, Gothic, Deseret, Byzantine Musical Symbols, Musical Symbols, Ancient Greek Musical Notation, Tai Xuan Jing Symbols, Counting Rod Numerals, Mathematical Alphanumeric Symbols, Mahjong Tiles, Domino Tiles, Playing Cards, Enclosed Alphanumeric Supplement, Enclosed Ideographic Supplement, Miscellaneous Symbols and Pictographs, Emoticons, Ornamental Dingbats, Transport and Map Symbols, Alchemical Symbols, Geometric Shapes Extended, Supplemental Arrows-C, Supplemental Symbols and Pictographs.

## Character Repertoire

## BASIC MULTILINGUAL PLANE

[illegible]

[illegible]



## SUPPLEMENTARY MULTILINGUAL PLANE

. X i m n o p q r s t u v w x y z - = > ? @ A B C D E F G H I J K L M N O P Q R S T U V W X Y Z [ \ ] ^ \_ ` { | } ~ ¡ ¢ £ ¤ ¥ ¦ § ¨ © ª « ¬ ® ¯ ° ± ² ³ ´ µ ¶ · ¸ ¹ º » ¼ ½ ¾ ¿ À Á Â Ã Ä Å Æ Ç È É Ê Ë Ì Í Î Ï Ñ Ò Ó Ô Õ Ö × Ø Ù Ú Û Ü Ý Þ ß à á â ã ä å æ ç è é ê ë ì í î ï ð ñ ò ó ô õ ö ø ù ú û ü ý þ ÿ



𐤀 𐤁 𐤂 𐤃 𐤄 𐤅 𐤆 𐤇 𐤈 𐤉 𐤊 𐤋 𐤌 𐤍 𐤎 𐤏 𐤐 𐤑 𐤒 𐤓 𐤔 𐤕 𐤖 𐤗 𐤘 𐤙 𐤚 𐤛 𐤜 𐤝 𐤞 𐤟 𐤠 𐤡 𐤢 𐤣 𐤤 𐤥 𐤦 𐤧 𐤨 𐤩 𐤪 𐤫 𐤬 𐤭 𐤮 𐤯 𐤰 𐤱 𐤲 𐤳 𐤴 𐤵 𐤶 𐤷 𐤸 𐤹 𐤺 𐤻 𐤼 𐤽 𐤾 𐤿 𐥀 𐥁 𐥂 𐥃 𐥄 𐥅 𐥆 𐥇 𐥈 𐥉 𐥊 𐥋 𐥌 𐥍 𐥎 𐥏 𐥐 𐥑 𐥒 𐥓 𐥔 𐥕 𐥖 𐥗 𐥘 𐥙 𐥚 𐥛 𐥜 𐥝 𐥞 𐥟 𐥠 𐥡 𐥢 𐥣 𐥤 𐥥 𐥦 𐥧 𐥨 𐥩 𐥪 𐥫 𐥬 𐥭 𐥮 𐥯 𐥰 𐥱 𐥲 𐥳 𐥴 𐥵 𐥶 𐥷 𐥸 𐥹 𐥺 𐥻 𐥼 𐥽 𐥾 𐥿 𐏀 𐏁 𐏂 𐏃 𐏄 𐏅 𐏆 𐏇 𐏈 𐏉 𐏊 𐏋 𐏌 𐏍 𐏎 𐏏 𐏐 𐏑 𐏒 𐏓 𐏔 𐏕 𐏖 𐏗 𐏘 𐏙 𐏚 𐏛 𐏜 𐏝 𐏞 𐏟 𐏠 𐏡 𐏢 𐏣 𐏤 𐏥 𐏦 𐏧 𐏨 𐏩 𐏪 𐏫 𐏬 𐏭 𐏮 𐏯 𐏰 𐏱 𐏲 𐏳 𐏴 𐏵 𐏶 𐏷 𐏸 𐏹 𐏺 𐏻 𐏼 𐏽 𐏾 𐏿 𐐀 𐐁 𐐂 𐐃 𐐄 𐐅 𐐆 𐐇 𐐈 𐐉 𐐊 𐐋 𐐌 𐐍 𐐎 𐐏 𐐐 𐐑 𐐒 𐐓 𐐔 𐐕 𐐖 𐐗 𐐘 𐐙 𐐚 𐐛 𐐜 𐐝 𐐞 𐐟 𐐠 𐐡 𐐢 𐐣 𐐤 𐐥 𐐦 𐐧 𐐨 𐐩 𐐪 𐐫 𐐬 𐐭 𐐮 𐐯 𐐰 𐐱 𐐲 𐐳 𐐴 𐐵 𐐶 𐐷 𐐸 𐐹 𐐺 𐐻 𐐼 𐐽 𐐾 𐐿 𐑀 𐑁 𐑂 𐑃 𐑄 𐑅 𐑆 𐑇 𐑈 𐑉 𐑊 𐑋 𐑌 𐑍 𐑎 𐑏 𐑐 𐑑 𐑒 𐑓 𐑔 𐑕 𐑖 𐑗 𐑘 𐑙 𐑚 𐑛 𐑜 𐑝 𐑞 𐑟 𐑠 𐑡 𐑢 𐑣 𐑤 𐑥 𐑦 𐑧 𐑨 𐑩 𐑪 𐑫 𐑬 𐑭 𐑮 𐑯 𐑰 𐑱 𐑲 𐑳 𐑴 𐑵 𐑶 𐑷 𐑸 𐑹 𐑺 𐑻 𐑼 𐑽 𐑾 𐑿 𐒀 𐒁 𐒂 𐒃 𐒄 𐒅 𐒆 𐒇 𐒈 𐒉 𐒊 𐒋 𐒌 𐒍 𐒎 𐒏 𐒐 𐒑 𐒒 𐒓 𐒔 𐒕 𐒖 𐒗 𐒘 𐒙 𐒚 𐒛 𐒜 𐒝 𐒞 𐒟 𐒠 𐒡 𐒢 𐒣 𐒤 𐒥 𐒦 𐒧 𐒨 𐒩 𐒪 𐒫 𐒬 𐒭 𐒮 𐒯 𐒰 𐒱 𐒲 𐒳 𐒴 𐒵 𐒶 𐒷 𐒸 𐒹 𐒺 𐒻 𐒼 𐒽 𐒾 𐒿 𐓀 𐓁 𐓂 𐓃 𐓄 𐓅 𐓆 𐓇 𐓈 𐓉 𐓊 𐓋 𐓌 𐓍 𐓎 𐓏 𐓐 𐓑 𐓒 𐓓 𐓔 𐓕 𐓖 𐓗 𐓘 𐓙 𐓚 𐓛 𐓜 𐓝 𐓞 𐓟 𐓠 𐓡 𐓢 𐓣 𐓤 𐓥 𐓦 𐓧 𐓨 𐓩 𐓪 𐓫 𐓬 𐓭 𐓮 𐓯 𐓰 𐓱 𐓲 𐓳 𐓴 𐓵 𐓶 𐓷 𐓸 𐓹 𐓺 𐓻 𐓼 𐓽 𐓾 𐓿 𐔀 𐔁 𐔂 𐔃 𐔄 𐔅 𐔆 𐔇 𐔈 𐔉 𐔊 𐔋 𐔌 𐔍 𐔎 𐔏 𐔐 𐔑 𐔒 𐔓 𐔔 𐔕 𐔖 𐔗 𐔘 𐔙 𐔚 𐔛 𐔜 𐔝 𐔞 𐔟 𐔠 𐔡 𐔢 𐔣 𐔤 𐔥 𐔦 𐔧 𐔨 𐔩 𐔪 𐔫 𐔬 𐔭 𐔮 𐔯 𐔰 𐔱 𐔲 𐔳 𐔴 𐔵 𐔶 𐔷 𐔸 𐔹 𐔺 𐔻 𐔼 𐔽 𐔾 𐔿 𐕀 𐕁 𐕂 𐕃 𐕄 𐕅 𐕆 𐕇 𐕈 𐕉 𐕊 𐕋 𐕌 𐕍 𐕎 𐕏 𐕐 𐕑 𐕒 𐕓 𐕔 𐕕 𐕖 𐕗 𐕘 𐕙 𐕚 𐕛 𐕜 𐕝 𐕞 𐕟 𐕠 𐕡 𐕢 𐕣 𐕤 𐕥 𐕦 𐕧 𐕨 𐕩 𐕪 𐕫 𐕬 𐕭 𐕮 𐕯 𐕰 𐕱 𐕲 𐕳 𐕴 𐕵 𐕶 𐕷 𐕸 𐕹 𐕺 𐕻 𐕼 𐕽 𐕾 𐕿 𐖀 𐖁 𐖂 𐖃 𐖄 𐖅 𐖆 𐖇 𐖈 𐖉 𐖊 𐖋 𐖌 𐖍 𐖎 𐖏 𐖐 𐖑 𐖒 𐖓 𐖔 𐖕 𐖖 𐖗 𐖘 𐖙 𐖚 𐖛 𐖜 𐖝 𐖞 𐖟 𐖠 𐖡 𐖢 𐖣 𐖤 𐖥 𐖦 𐖧 𐖨 𐖩 𐖪 𐖫 𐖬 𐖭 𐖮 𐖯 𐖰 𐖱 𐖲 𐖳 𐖴 𐖵 𐖶 𐖷 𐖸 𐖹 𐖺 𐖻 𐖼 𐖽 𐖾 𐖿 𐗀 𐗁 𐗂 𐗃 𐗄 𐗅 𐗆 𐗇 𐗈 𐗉 𐗊 𐗋 𐗌 𐗍 𐗎 𐗏 𐗐 𐗑 𐗒 𐗓 𐗔 𐗕 𐗖 𐗗 𐗘 𐗙 𐗚 𐗛 𐗜 𐗝 𐗞 𐗟 𐗠 𐗡 𐗢 𐗣 𐗤 𐗥 𐗦 𐗧 𐗨 𐗩 𐗪 𐗫 𐗬 𐗭 𐗮 𐗯 𐗰 𐗱 𐗲 𐗳 𐗴 𐗵 𐗶 𐗷 𐗸 𐗹 𐗺 𐗻 𐗼 𐗽 𐗾 𐗿 𐘀 𐘁 𐘂 𐘃 𐘄 𐘅 𐘆 𐘇 𐘈 𐘉 𐘊 𐘋 𐘌 𐘍 𐘎 𐘏 𐘐 𐘑 𐘒 𐘓 𐘔 𐘕 𐘖 𐘗 𐘘 𐘙 𐘚 𐘛 𐘜 𐘝 𐘞 𐘟 𐘠 𐘡 𐘢 𐘣 𐘤 𐘥 𐘦 𐘧 𐘨 𐘩 𐘪 𐘫 𐘬 𐘭 𐘮 𐘯 𐘰 𐘱 𐘲 𐘳 𐘴 𐘵 𐘶 𐘷 𐘸 𐘹 𐘺 𐘻 𐘼 𐘽 𐘾 𐘿 𐙀 𐙁 𐙂 𐙃 𐙄 𐙅 𐙆 𐙇 𐙈 𐙉 𐙊 𐙋 𐙌 𐙍 𐙎 𐙏 𐙐 𐙑 𐙒 𐙓 𐙔 𐙕 𐙖 𐙗 𐙘 𐙙 𐙚 𐙛 𐙜 𐙝 𐙞 𐙟 𐙠 𐙡 𐙢 𐙣 𐙤 𐙥 𐙦 𐙧 𐙨 𐙩 𐙪 𐙫 𐙬 𐙭 𐙮 𐙯 𐙰 𐙱



